



WATCHDATA

WATCHDATA
Convergence in Motion



Watchdata SIMachine (M2M Solution)



For Security Reasons, Always Watchdata





A

Introduction to M2M

B

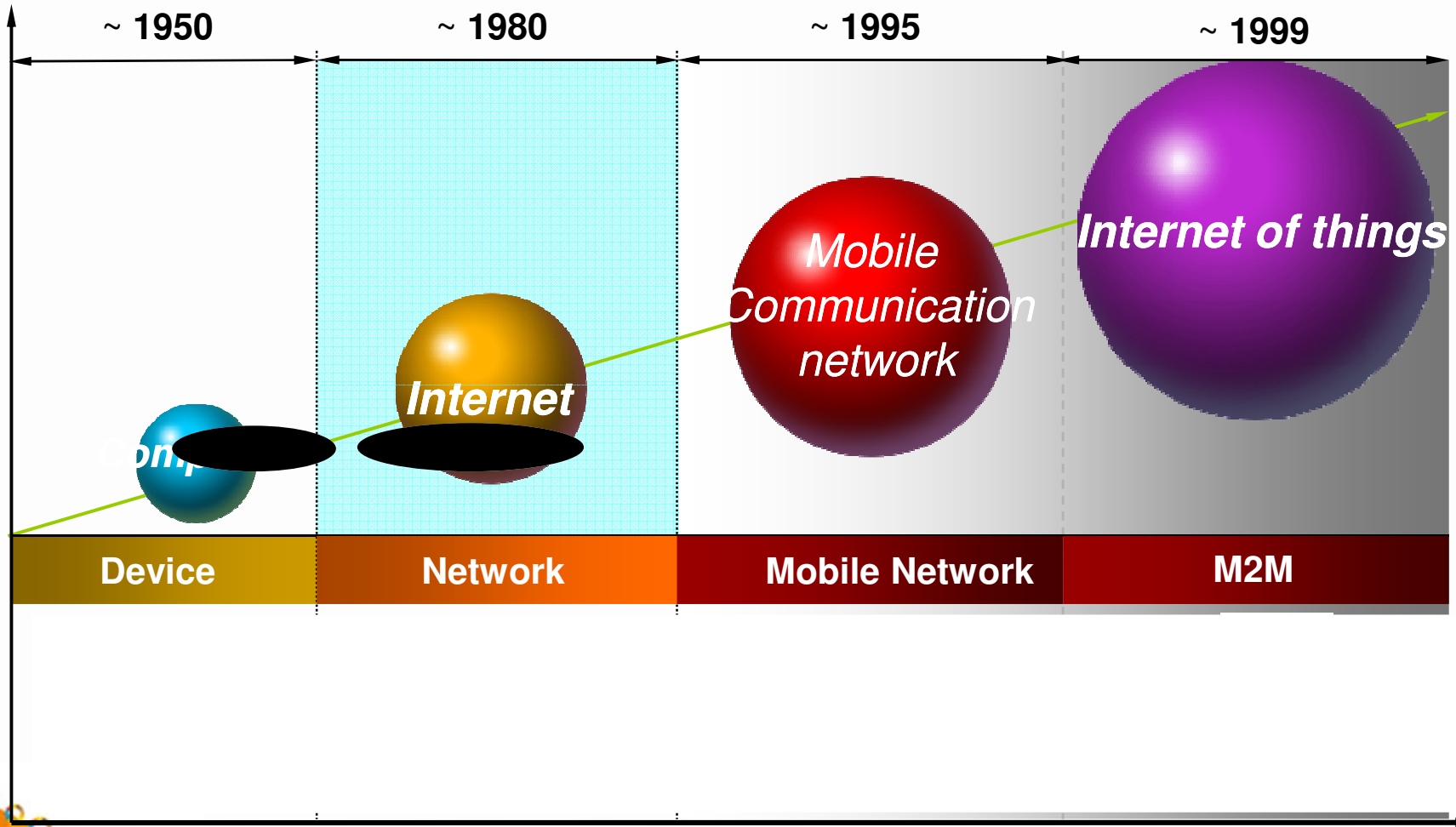
Introduction to SIMachine™

C

SIMachine™ Product Applications



Technology Evolution



For Security Reasons, Always Watchdata



Internet of Things

Internet Of Things (IOT) refers to a huge network of sensors connecting everyday objects (RFID, Infrared, GPS, Laser scanner, etc....) for identification, security monitoring, control, data transfer....

Smart cards projects can cater MILLION cards

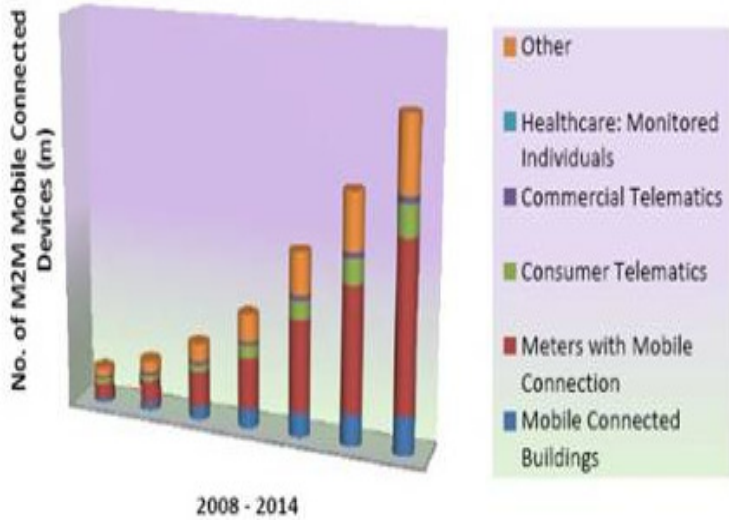
Handsets projects can cater BILLION handsets

IOT projects can cater 50 to 100 TRILLION objects

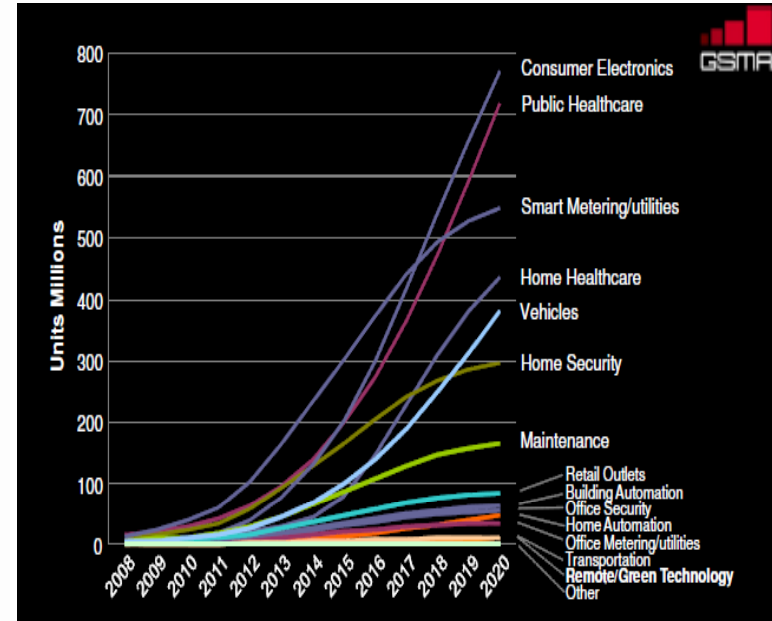
M2M stands for “machine to machine” communication, This system allows communications between two equipments without human intervention.



M2M - IOT Market evolution



Source: Juniper Research



It seems there is **NO LIMIT** in terms of :

- **Volume**
- **Revenue**
- **All industries** are concerned
- **All regions** will deploy



For Security Reasons, Always Watchdata



Domains of application



Metering



Electric power



Automotive



City management



Agriculture



Consumer electronics



Enterprises security

Identification
Traffic signage
Alert
Stock control
Fleet management
Data collection
Control
Monitoring

Positioning
Quality control
Dispatching
Data collection
Monitoring
Security
Remote inspection
Flow rates control
Anti-cloning



healthcare



Vending



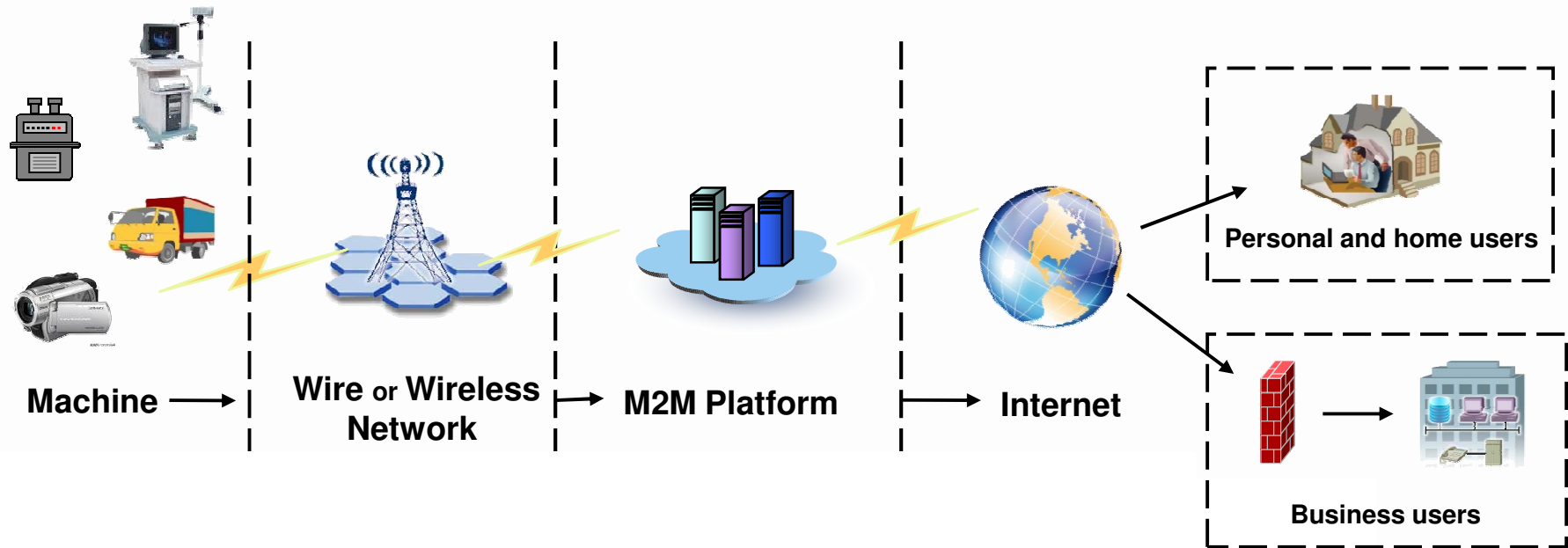
Household



Building control



M2M Architecture (Value chain)



This new market does not require new technologies.

- Miniaturization of devices, chips, sensors will be fully used
- It will use all existing networks (short distance - long distance)
- No need of “high speed” networks (data transfer only)

Key points to manage

- Administration of big volume of objects
- Real-time treatment
- **Security, reliability**





WATCHDATA

WATCHDATA
Convergence in Motion

A

Introduction to M2M

B

Introduction to SIMachine™

C

SIMachine™ Product Application



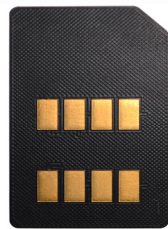
For Security Reasons, Always Watchdata





Different form factors for different applications

Standard plug-in
with more robustness
Working temperature -40° / $+105^{\circ}$ C
500.000 write/erase cycles
humidity 85° C / 85% 1000 hours
Long Lifespan



SIMachine "High"

Standard SIM
Normal package for
soft environment
Long Lifespan



SIMachine "Standard"

Three Offers

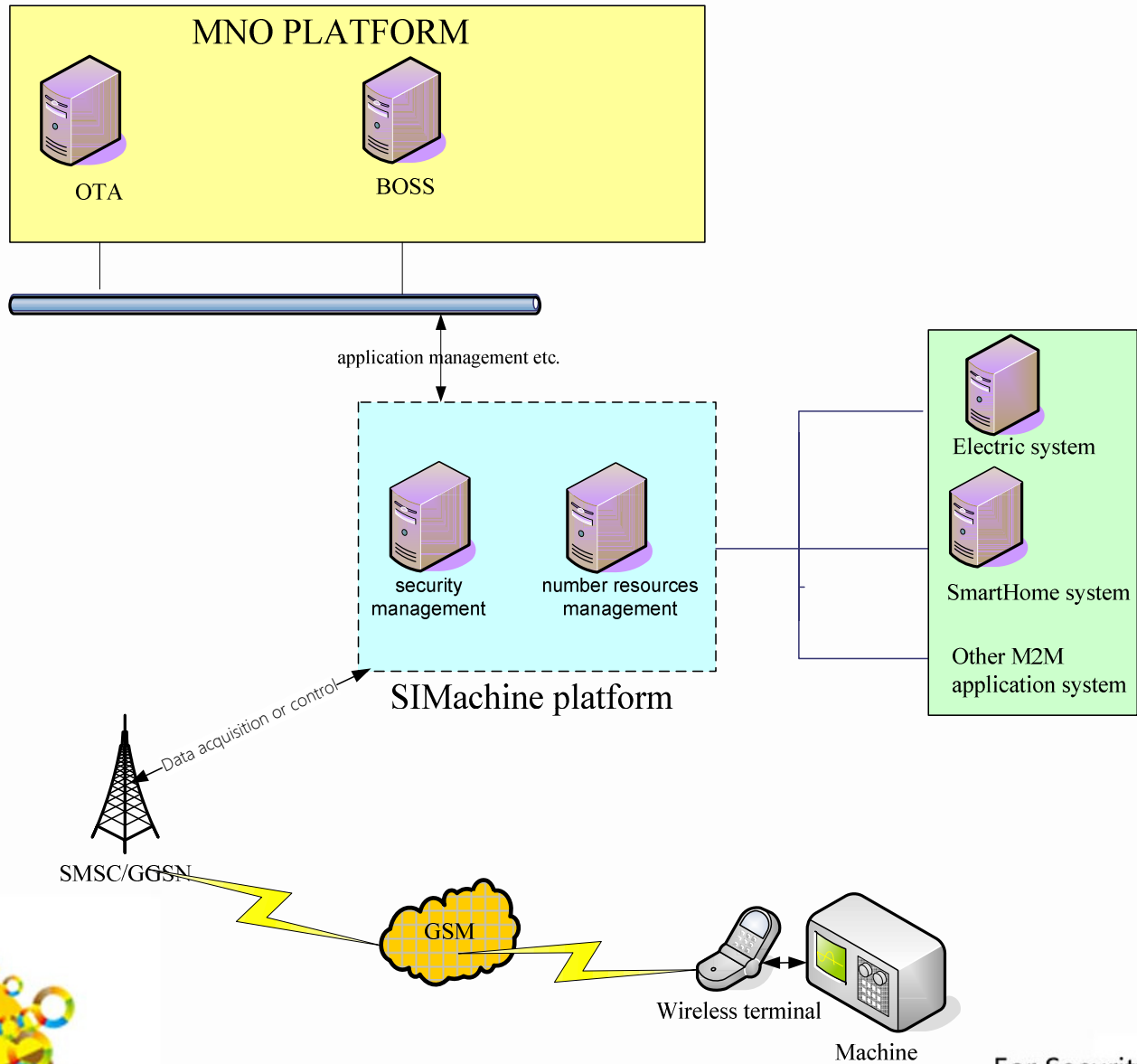
Semiconductor packaging
(such as QFN8)
Working temperature -40° C $+105^{\circ}$ C
500.000 write/erase cycles
Humidity 85° C / 85% 1000 hours
vibrations 20Hz to 2000Hz
Long Lifespan
welded and impossible to take off



SIMachine "Full"



SIMachine Platform



For Security Reasons, Always Watchdata





SIMachine Benefits

- Open unlimited opportunities of business
- Easy to implement
- New source of revenue

- Automatic data transmission
- Suppression of maintenance costs
- Greatly reducing labor costs
- Reduce transcription errors
- Improved work efficiency
- Increase security
- Robust

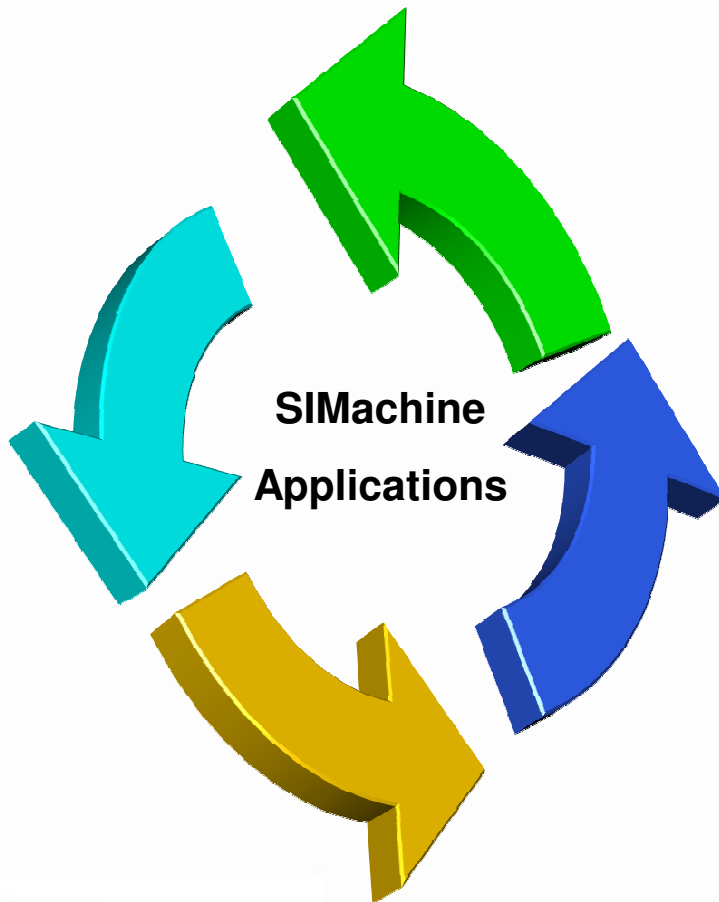


SIMachine Product applications



WATCHDATA

WATCHDATA
Convergence in Motion



- **Electrical power meter**
Successful deployment (3.6 million meters)
High security “Consumption Management”
data collection, authentication, encryption, ...
- **Car embedded applications**
Successfully launched with :
China Unicom and the ROEWE 350
China Mobile with the NISSAN
China Telecom and the BMW
Help desk, traffic management, stock market
information, chat with friends, internet access, Weather
condition,



For Security Reasons, Always Watchdata

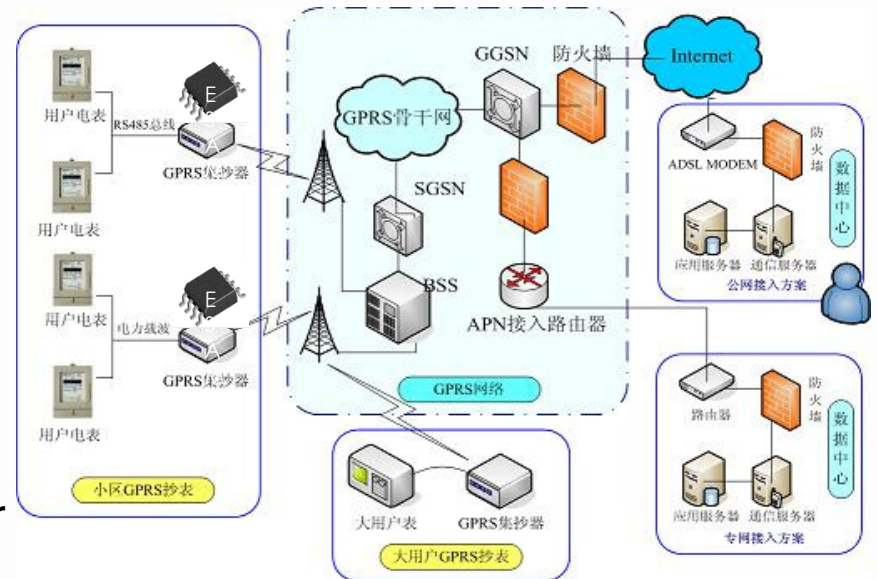




SIMachine.energy



The electricity/gas/water company no longer need to visit each household for reading of the electric meters.



SIMachine.vehicle



Help driver enjoy the 3G automobile telecommunication services.



For Security Reasons, Always Watchdata



SIMachine.map



- Locating
- Tracking
- Attendance management

Provides the location-based services by an applet in the SIM card, which can send location information to the service via SMS. We can check the location and tracking line on the server.



For Security Reasons, Always Watchdata





WATCHDATA

WATCHDATA
Convergence in Motion

Thank you

For more information, please contact

- nishant@watchdata.com.sg
- Deepak.k@watchdata.com.sg



For Security Reasons, Always Watchdata

